



Trans-Quip Inc.'s Jacks Journal

June 2005

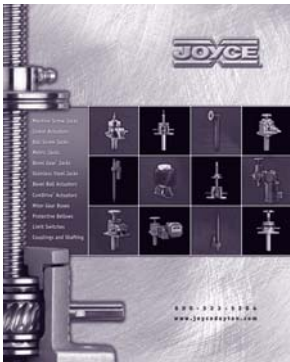
Joyce/Dayton Corp. Offers New Jacks & Actuators Catalogue and Free JAX® V2.0 Software

· Expanded 156 Page Catalogue Includes New Components & Accessories ·

Joyce/Dayton Corp., the premier manufacturer of screw jacks, actuators and speed reduction equipment, recently announced the release of its new 156-page Jacks & Actuators catalogue, the most extensive catalogue to date.

In addition to complete engineering data and ordering information for the company's complete line of jacks, actuators and accessories, the catalogue includes detailed information on several new products. These include Joyce Ball Screw ComDRIVES®, Metric Jacks and Linear Actuators. The catalogue also includes information on new accessory offerings, including Trunnions, Handwheels, Counters and Geared Potentiometers.

"The Joyce Jacks & Actuators catalogue has been a valuable industry resource for years", stated Mike Harris, Marketing Manager for Joyce/Dayton. "Now, with 50% more content, and completely updated ordering information, designers and engineers will have the data they need to properly select and specify Joyce® products. In conjunction with the catalogue, engineers can save time and simplify the design process with our industry exclusive JAX® V2.0 Jack Selection Software designed to select products, create 3D models, design jacking systems, and request a quote with just a few clicks of the mouse."



The Windows®-based JAX V2.0 software, available on CD-ROM, is a complete source for jack selection and engineering data and includes all the information designers may need to specify the right components for applications. JAX software automatically selects the proper jack according to application conditions, or allows an alternate jack to be selected.



Users can examine power requirements, stresses, and other application criteria. The JAX programming can store multiple jack selections, and can handle mixed unit systems. Features of the new JAX V2.0 include:

- AutoCAD drawing files of jacks and accessories which may be dropped directly into a customer's own drawings.
- Custom System Configurations, which supports system design and generates a bill of material automatically.
- 3D Solid Models that can be viewed or downloaded.
- Request A Quote feature for expedited estimates.
- Automatic Updates to keep engineering data as current as possible.

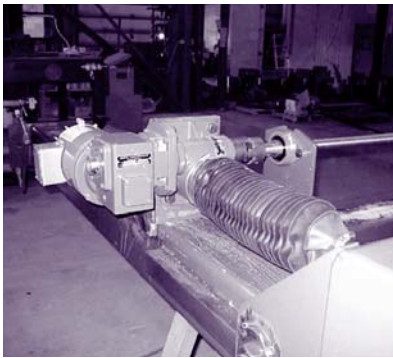
To request a copy of the new Joyce catalogue or JAX® V2.0 CD-Rom, please email Trans-Quip Inc. at info@trans-quip.com or contact us at 1-866-261-0251.

Featured Application

ComDRIVE Powers Stacker Used for Drying Wood in Kiln

A leader in the design and fabrication of high performance sawmill and planing mill equipment, located in Plessisville, QC, approached Trans-Quip Inc. for a reliable power transmission solution to power a "stacker".

The stacker is used to bundle pieces of wood ranging from 2" to 12" in width and 1" to 8" in thickness in preparation for kiln-drying. Trans-Quip supplied a complete Joyce® ComDRIVE



system, model #CD65-1.5-5:1-22-UP-T3-RS-POS3 with encoder and bellow. Attached to the ComDRIVE, via shafting, is a slave drive model #WJT65-22-UP machine jack, also with bellow. Both

units were incorporated into the machine in order to accommodate the operating requirements and speed.

The key benefits provided by this type of actuation were not only cost savings and minimum maintenance, but the flexibility of positioning the press arms at any height.

JACK SPECIFICATIONS:

Model: CD65-1.5-5:1-22-UP-T3-RS-POS3
Capacity: 5 ton Ratio: 5:1 Rise: 22"
Screw Type: ComDRIVE system

Q & A

Q: What strokes are available for the Linear Actuator line?

A: The 500 lb. Linear Actuators have a maximum stroke of 18 inches. The 1,500 lb. Linear Actuators have a maximum stroke of 24 inches.



The maximum stroke for the Integrated Actuator line of 250 lb. to 2,000 lb. capacity have maximum stroke of 24 inches.

Q: Are protective bellows available for Linear Actuators?

A: Protective bellows are not required for the Joyce Linear Actuator product line. The units are totally sealed, enclosed units with telescoping tubes.

Q: Why would I use Linear Actuators instead of a similar capacity screw jack?

A: A Linear Actuator will fit in areas where a regular screw jack may not. Linear Actuators come as a complete package solution including actuator, motor, limit switches and position feedback (potentiometer). This type of actuator is typically used for light duty applications where space is limited as opposed to screw jacks which require more space.

Attention!!

Est-ce que vous préférez le "Jacks Journal" prochain en Français? SVP - Envoyez votre réponse par Fax (905) 945-0062 ou info@trans-quip.com.

Merci!

Par Malle

Par Courriel

Nom: _____

Compagnie: _____

Votre Courriel: _____

Votre Téléphone: _____ Date: _____



Trans-Quip Inc. 266 Kerman Ave., Grimsby, Ontario L3M 3W6 Phone: (905) 945-4480
Email: info@trans-quip.com **1-866-261-0251**
Website: www.trans-quip.com Fax: (905) 945-0062